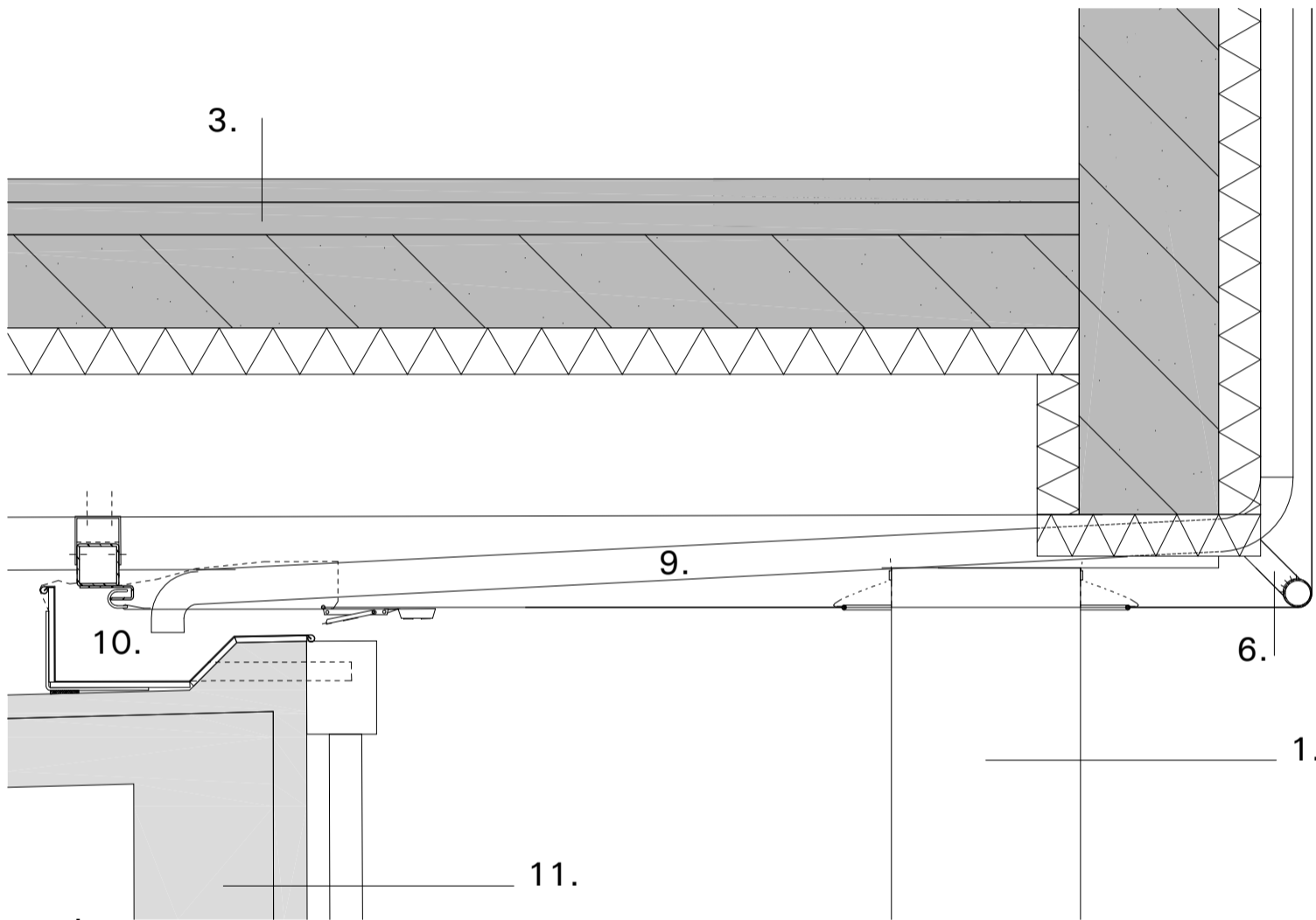
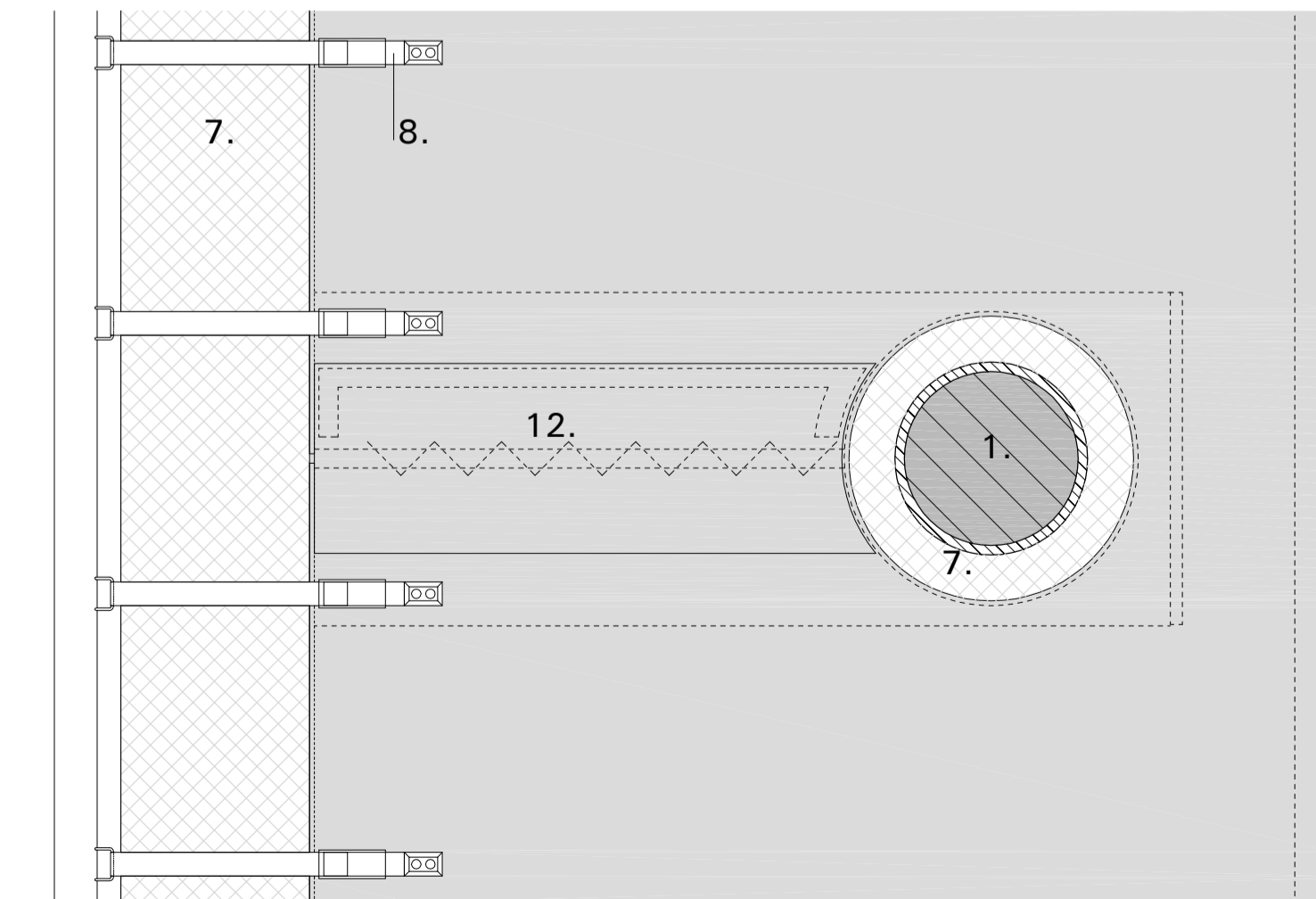


archives



section



bottom view

reference to the details of the archives building

1. steel gables with concrete filled columns Ø 406 mm, RAL 9006
2. load-bearing, prefab concrete façade panel
  - damp-proof course
  - PE-foil
  - rockwool insulation sheets
  - water-repellent foil
  - air cavity
  - PVC-coated polyester fabric in the colour of the roofing, RAL 7016
3. insulated hollowcore slab, U value = 0,33 W/m<sup>2</sup>K
  - 200 mm with 70mm press load
  - fire-resistant for 120 minutes
  - floor of sand cement
  - synthetic resin bound epoxy finishing RAL 9003
4. roof
  - hollowcore slab 320 mm with 80 mm press load
  - damp-proof course, PE-foil
  - rockwool insulating roofing sheet, flat
  - rockwool insulating roofing sheet, slope
  - dark grey PVC roofing, RAL 7016 mechanically mounted
5. gutter with Pluvia rainwater discharge
6. thermally galvanized and coated supporting structure for the stretched fabric façade
7. bird and insect screen
8. clamping mechanism
9. downspout
10. zinc gutter of the existing building
11. existing building
12. fabric overlap around the columns, fixing with Velcro and laces