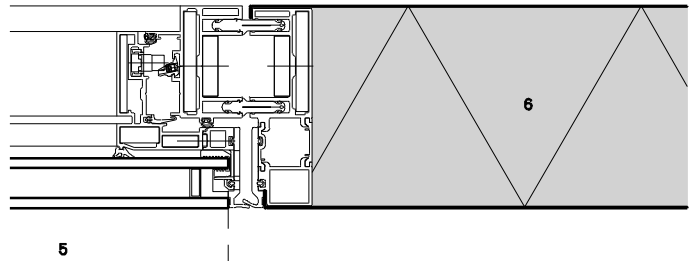
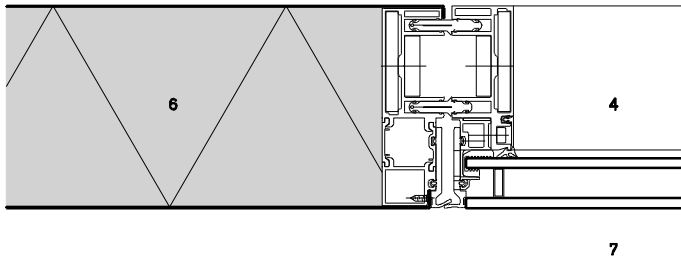
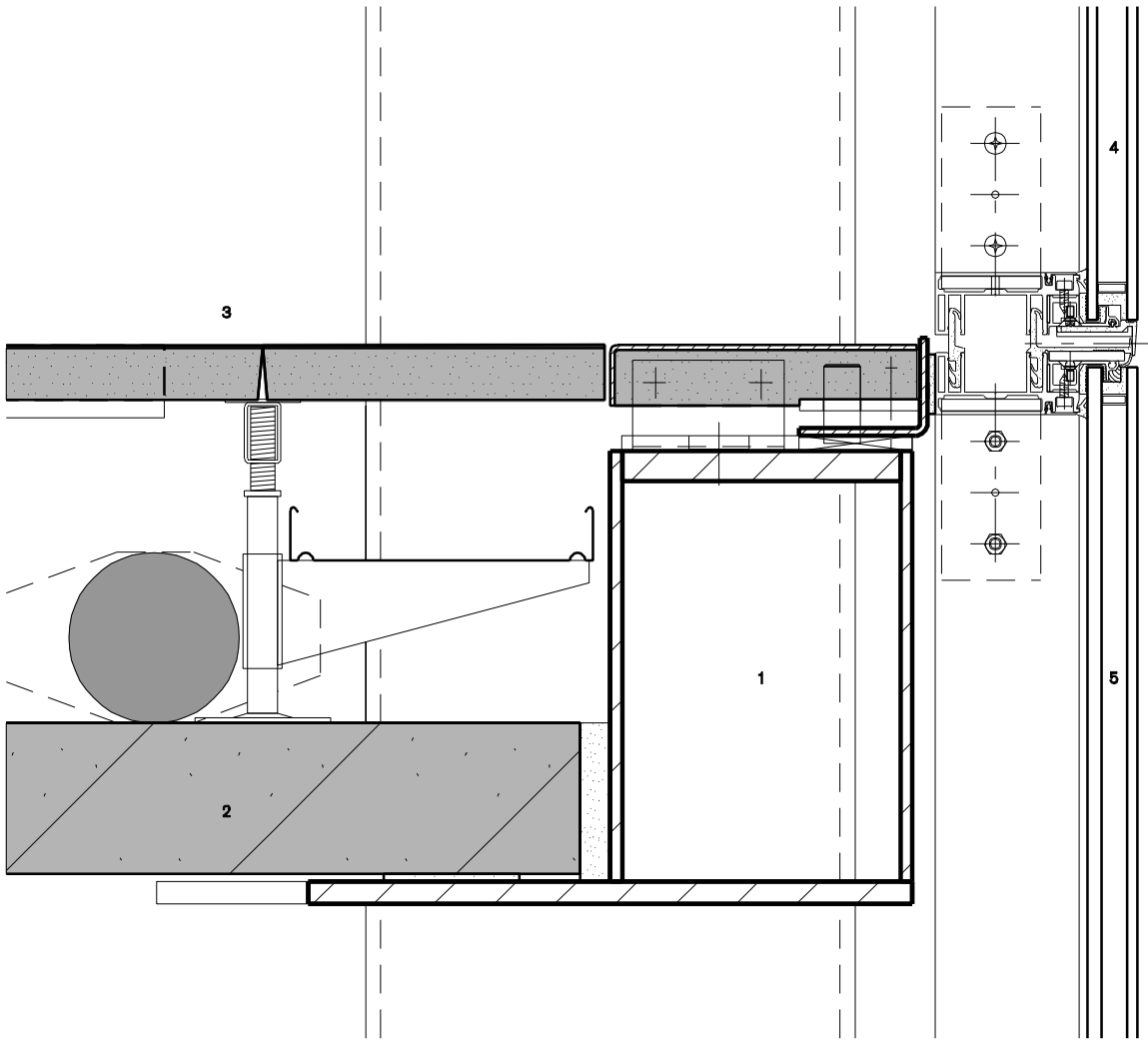


Exterior façade of offices:  
detail of floor edging and horizontal  
detail

- 1 steel single-flange beam, with fire-resistant coating
- 2 wing floor equipped with piping for concrete core activation
- 3 raised floor tiles, fibreglass-reinforced anhydrite
- 4 sun-resistant insulating glass, shatter-proof
- 5 top-hung sash window with sun-resistant insulating glass
- 6 sandwich panel of stainless steel, rock wool, white-coated steel plating
- 7 rubber seal



0 10cm 20cm 30cm

